

Flow Control Valves Flow Control & Check Valves

Max. Pressure 21 MPa

C



These valves are pressure and temperature compensating type valves and maintain a constant flow rate independent of change in system pressure (load) and temperature (viscosity of the fluid). The valves have a digital flow adjusting dial to set the flow rate easily.

The valves with an integral check valve allow free oil flow from the outlet port to the inlet port.

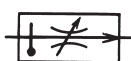
Ratings

Valve Size	Model No.	Max. Metered Flow Capacity L/min	Min. Metered Flow Capacity L/min	Max. Pressure MPa (kgf/cm ²)	Mass kg
1/4	FG-02-30-※-30 FCG-02-30-※-30	30	0.05	21 (210)	3.8
3/8	FG-03-125-※-30 FCG-03-125-※-30	125	0.2		7.9
* 3/4	FG-06-250-※-30 FCG-06-250-※-30	250	2		23.0
* 1 1/4	FG-10-500-※-30 FCG-10-500-※-30	500	4		52.0

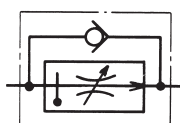
* Products are made by Yuken Kogyo. If you have any inquiry, please contact our sales engineers.

Graphic Symbol

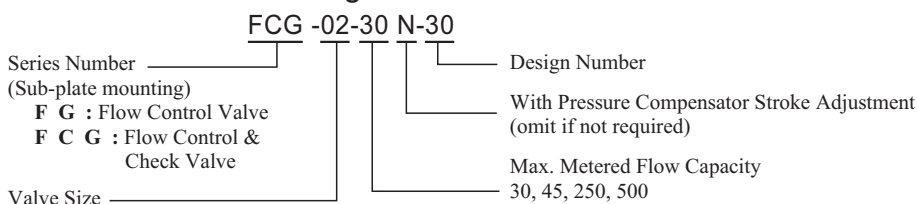
FG



FCG



Model Number Designation



Mounting Bolt (Attachment)

Model NO.	Socket Head Cap Screw	Q'ty	Tightening Torque N•m
F※G-02	M8 x 50 Lg	4	31~38
F※G-03	M10 x 75 Lg	4	60~74
F※G-06	M16 x 130 Lg	4	253~310
F※G-10	M20 x 160 Lg	4	493~603

Sub-plate

Valve Model No.	Sub-plate Model No.	Piping Size Rc	Mass kg
FG -02 FCG	FGM-02-20	1/4	2.3
	FGM-02X-20	3/8	
	FGM-02Y-20	1/2	3.1
FG -03 FCG	FGM-03X-20	1/2	3.9
	FGM-03Y-20	3/4	
	FGM-03Z-20	1	5.7
FG -06 FCG	FGM-06X-20	1	12.5
	FGM-06Y-20	1-1/4	
	FGM-06Z-20	1-1/2	16
FG -10 FCG	FGM-10Y-20	1-1/2 or 2 Flange Mounting *	37

Sub-plates are available. When ordering, please specify sub-plate model no. from the table above. Please refer to page 76 for dimensions.

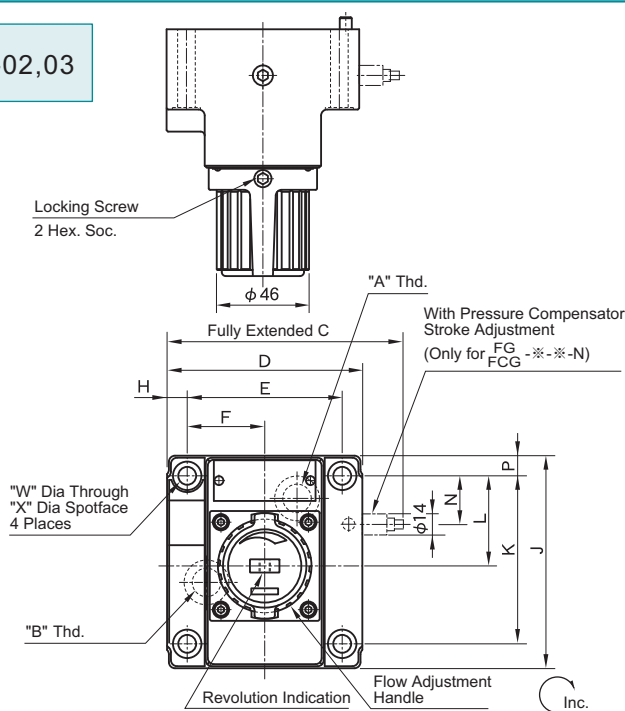
* When ordering FGM-10Y, please see type F3 series pipe flanges.

Flow Control Valves Flow Control & Check Valves

Max. Pressure 21 MPa

C

FG
FCG -02,03



Mounting Surface:

F※G-02:ISO 6263-AB-06-4-B-87

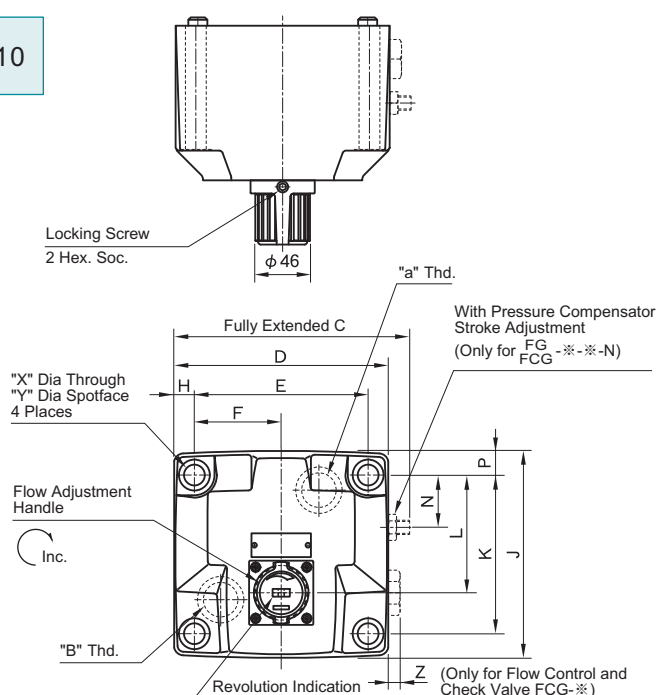
F※G-03:ISO 6263-AK-07-2-A-87

Note: For dimensions of mounting surface, please refer to FGM-02 & 03 type sub-plate on next page (page 76)

Model No.	"A" Thd.	"B" Thd.
FG-02,03	Controlled Flow Inlet	Controlled Flow Outlet
FCG-02,03	Controlled Flow Inlet or Reversed Free Flow Outlet Port	Controlled Flow Outlet or Reversed Free Flow Inlet Port

Model No.	C	D	E	F	H	J	K	L	N	P	Q	S	T	U	V	W	X	Y
FG-02	116	96	76.2	38.1	9.9	104.5	82.6	44.3	24	9.9	123	69	40	23	1	8.8	14	39
FCG-03	145	125	101.6	50.8	11.7	125	101.6	61.8	29.8	11.7	152	98	64	41	2	11	17.5	63

FG
FCG -06,10



Mounting Surface:

F※G-06:ISO 6263-AP-08-2-A-87

Note: For dimensions of mounting surface, please refer to FGM-06 & 10 type sub-plate on next page (page 76)

Model No.	"A" Thd.	"B" Thd.
FG-06,10	Controlled Flow Inlet	Controlled Flow Outlet
FCG-06,10	Controlled Flow Inlet or Reversed Free Flow Outlet Port	Controlled Flow Outlet or Reversed Free Flow Inlet Port

Model No.	C	D	E	F	H	J	K	L	N	P	Q	S	T	U	V	W	X	Y	Z	a
FG-06	198	180	146.1	73	17	174	133.4	99	44	20.3	184	130	105	65	16	7	17.5	26	9	103
FCG-10	267	244	196.9	98.5	23.5	228	177.8	144.5	61	25	214	160	137	85	18	10	21.5	32	7.5	133