



CE ISO9001

MSV Series Mechanical valve



MSV86522-EB MSV86522-PB MSV86522-TB MSV86522-LB MSV86522-PP MSV86522-PPL MSV86522-R

Ordering Code

MSV **98** **32** **1** **R**

Specification Code
Mechanical Valve

Series Code
98 Series
86 Series

Position and Way Number
32:Two-position Three-way
52:Two-position Five-way

Port Size
1:G1/8"
2:G1/4"

Button type
Blank:Normal Type
R: Roller Type
TB:Selective Knob
LB:Strengthened Knob
PB:Large Round Boutton
PP:Plat Round Button
PPL:Convex Round Button
EB:With Lock Button

Specification

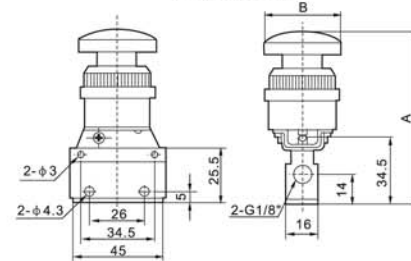
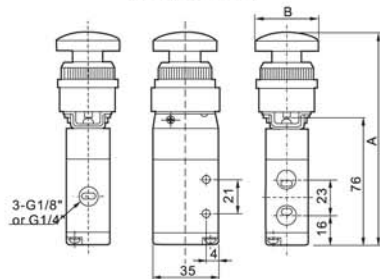
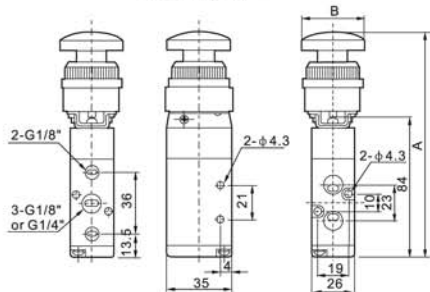
Model	MSV86321	MSV86522	MSV98322
Working Medium	40 Micron Filtered Air		
Position and Way No.	Two-position Three-way	Two-position Five-way	Two position Three-way
Effective Section Area	12mm ² (CV=0.67)	16mm ² (CV=0.89)	16mm ² (CV=0.89)
Port Size	G1/8"	G1/4"	G1/4"
Pressure Range	0~0.8Mpa		
Temperature Range	0~60°C		

Overall Dimensions

MSV86522

MSV98322

MSV86321



PP

PPL

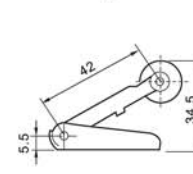
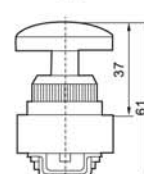
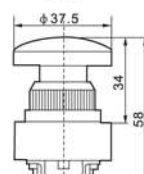
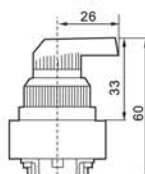
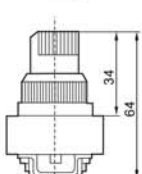
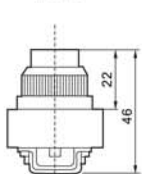
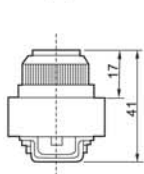
TB

LB

PB

EB

R



Dimension Sheet

Series	Symbol/Model	PP	PPL	LB	TB	EB	PB	R
MSV86522	A	114	119	133	136.5	134	131	107.5
	B	39.5	24.5	26.5	36.5	39.5	37.5	42.5
MSV98322	A	106	111	125	129.5	126	123	99.5
	B	39.5	24.5	26.5	36.5	39.5	37.5	42.5
MSV86321	A	66	71	85	88.5	86	83	59.5
	B	39.5	24.5	26.5	36.5	39.5	37.5	42.5



CE ISO9001

MOV Series Mechanical valve



MOV-01



MOV-02



MOV-03



MOV-04

Ordering Code

MOV

01

Specification Code
Machine-Control,
Hand-Control Valve

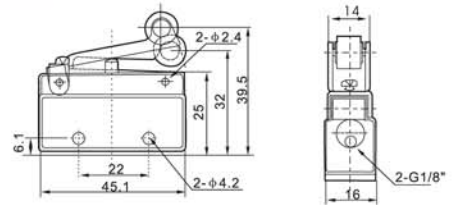
Button Type
01: Selective Knob
02: Roller Type
03: With Lock Button
04: Flat Round Button

Specification

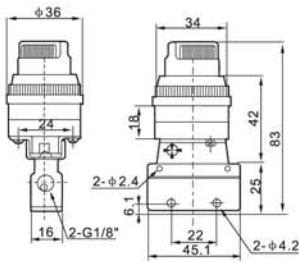
Model	MOV-01	MOV-02	MOV-03	MOV-04
Working Medium	Air			
Position and Way No.	Two-position Two-way			
Port Size	G1/8"			
Working-pressure Range	0~0.8MPa			
Operating Temperature	0~70℃			

Overall Dimensions

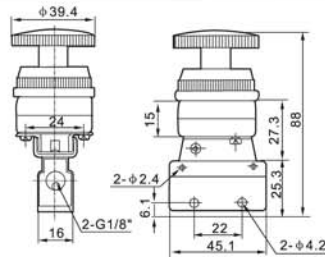
MOV-02



MOV-01



MOV-03



MOV-04

