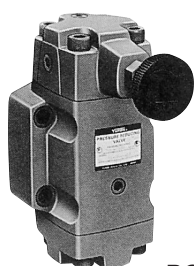


Pressure Reducing Valves Pressure Reducing & Check Valves

Max. Pressure 21 MPa

B



RG Type

Graphic Symbol

RT, RG



Remote Control Connection

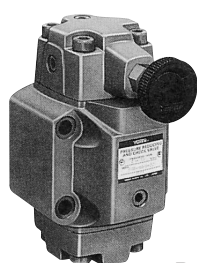
These valves are used to limit the pressure in a part of the circuit to something lower than that required in the main circuit. The valves may be controlled by pilot pressure from a remote control port. They are available with integral check valves for use when free reverse flow from the secondary port to the primary port is required.

Rating

Valve Size	Model No.	Max. Flow L/min*		Mass kg
		Setting Pressure MPa		
3/8	RT-03-※-22	0.7 ~ 1.0	40	4.3
	RG-03-※-22			4.5
	RCT-03-※-22	1.0 ~ 20.5	50	4.8
	RCG-03-※-22			5.4
3/4	RT-06-※-22	0.7 ~ 1.0	50	6.9
	RG-06-※-22	1.0 ~ 1.5	100	6.8
	RCT-06-※-22	1.5 ~ 20.5	125	7.8
	RCG-06-※-22			8.1
1 1/4	RT-10-※-22	0.7 ~ 1.0	130	12.0
	RG-10-※-22	1.0 ~ 1.5	180	11.0
	RCT-10-※-22	1.5 ~ 10.5	220	13.8
	RCG-10-※-22	10.5 ~ 20.5	250	13.8

* The Max. flow rates are those shown at the primary pressure of 210kgf/cm²

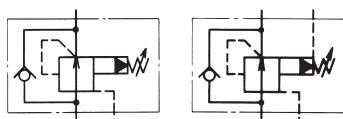
Model Number Designation



RCG Type

Graphic Symbol

RCT, RCG



Remote Control Connection

RC T-03-B-22

Series Number ——— RC
R: Pressure Reducing Valve
RC: Pressure Reducing & Check Valve

Type of Connection ——— T
T: Threaded Connection
G: Sub-plate Mounting

Design Number ——— 03-B-22
Pressure Adjustment Range MPa (kgf/cm²)
B: 0.7~7.0 (7~70)
C: 3.5~14.0 (35~140)
H: 7.0~20.5 (70~205)

Valve Size (03, 06, 10) ——— 22

Mounting Bolts (Attachment)

Model No.	Socket Head Cap Screw	Q'ty	Tightening Torque N•m
RG-03	M10 x 50 Lg	4	60~74
RCG-03	M10 x 70 Lg	4	
RG-06	M10 x 50 Lg	4	
RCG-06	M10 x 80 Lg	4	
RG-10	M10 x 50 Lg	6	
RCG-10	M10 x 90 Lg	6	

Sub-Plate

Valve Model No.	Sub-plate Model No.	Piping Size Rc	Mass kg
RG -03	HGM-03-20	3/8	1.6
RCG -03	HGM-03X-20	1/2	
RG -06	HGM-06-20	3/4	2.4
RCG -06	HGM-06X-20	1	3.0
RG -10	HGM-10-20	1-1/4	4.8
RCG -10	HGM-10X-20	1-1/2	5.7

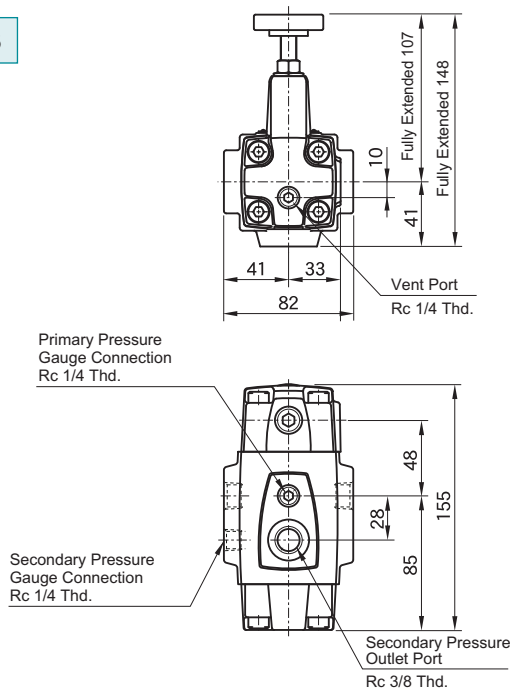
*1. The sub-plates are available. Please specify sub-plate model from the table above. Please refer to page 66 for dimension details.

*2. Note: The sub-plates are the same as those for H and HC type pressure controlled valve. With the pressure reducing valve, the sub-plate is used in a position 180° turned (upside down) from the normal position.

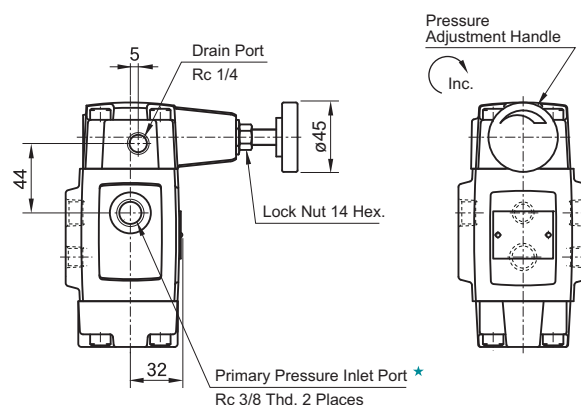
Pressure Reducing Valves

Max. Pressure 21 MPa

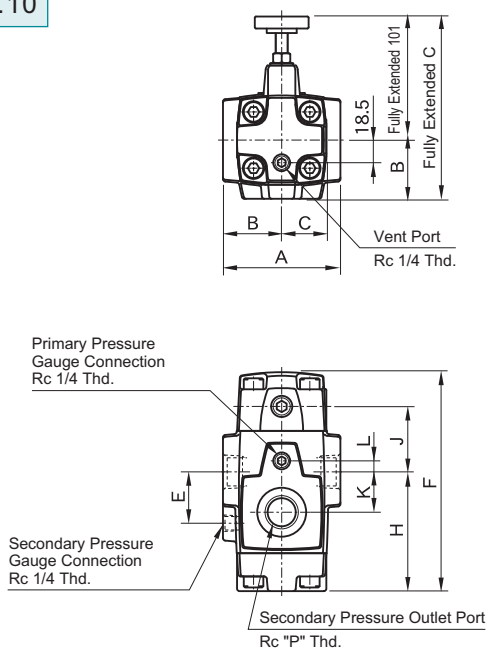
RT-03



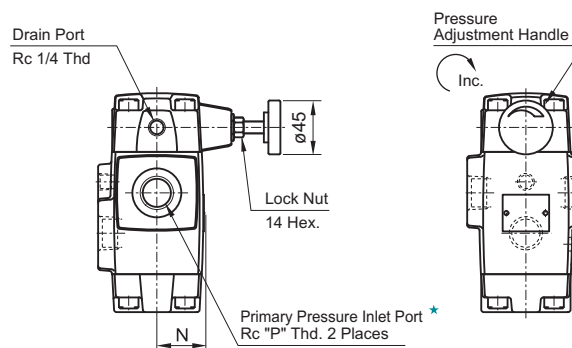
★ There are two Primary Pressure Ports. One can be used as an inlet port and the other as an outlet port with threaded connection. You can also block one port as your requirement.



RT-06.10



★ There are two Primary Pressure Ports. One can be used as an inlet port and the other as an outlet port with threaded connection. You can also block one port as your requirement.



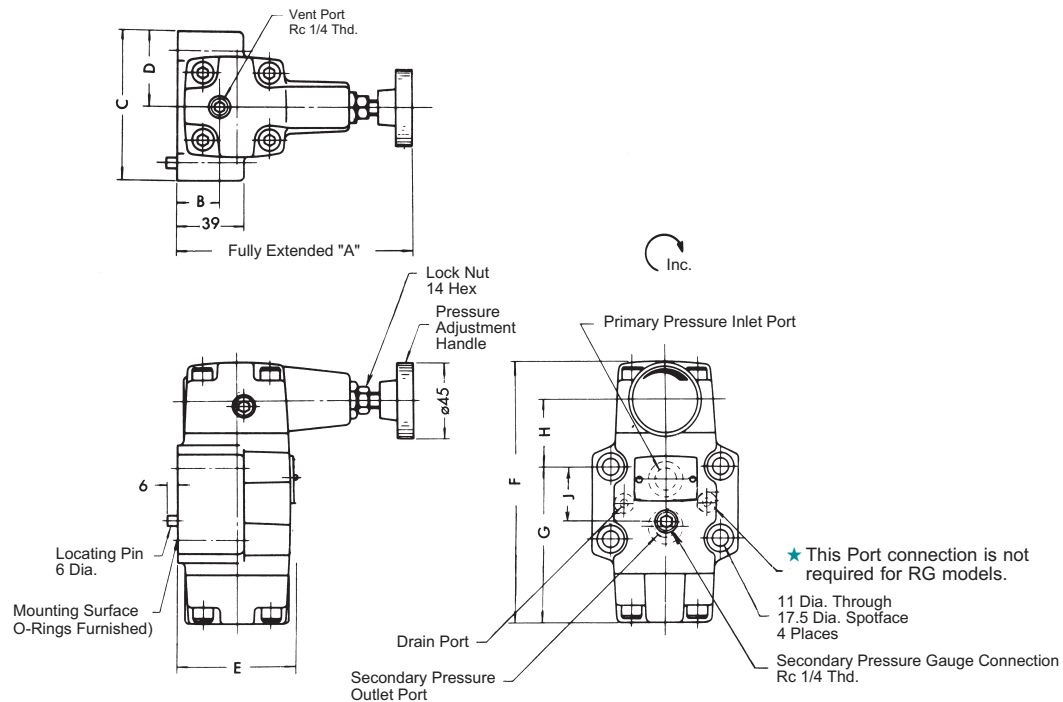
Model No.	A	B	C	D	E	F	H	J	K	L	N	Q
RT-06	96	48	36.5	149	42	179	97.5	53.5	33	9	39	3/4
RT-10	132	66	43	167	52	216	124	64	40	12	46	1-1/4

Pressure Reducing Valves

Max. Pressure 21 MPa

B

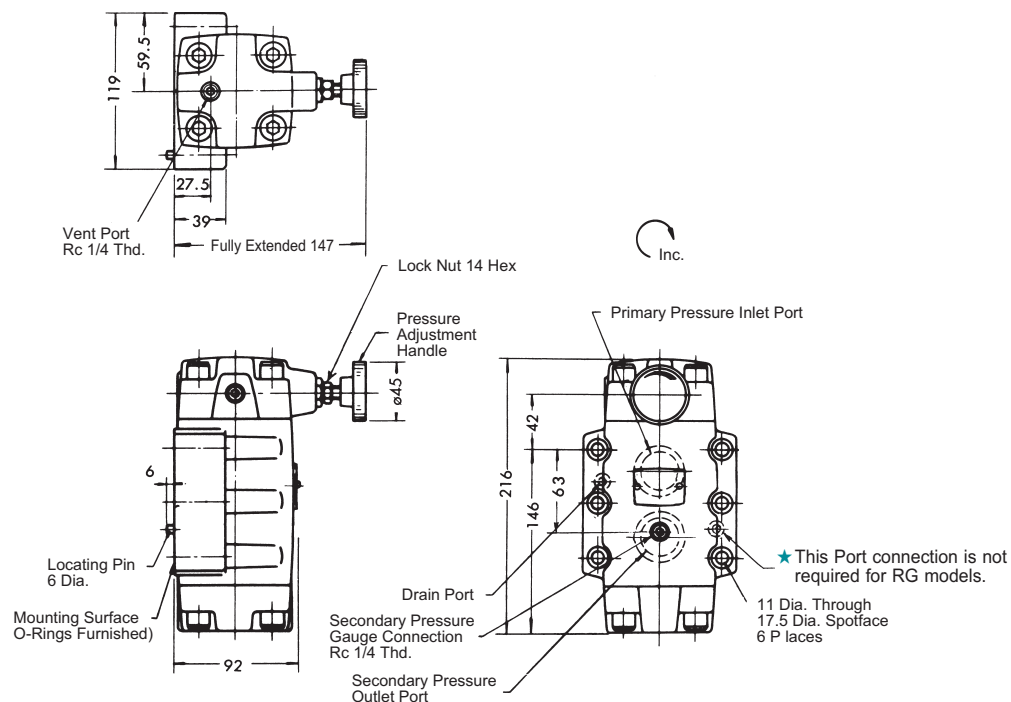
RG-03,06



Model No.	A	B	C	D	E	F	G	H	J
RG-03	142	25	89	44.5	67	155.5	92.4	40.6	34.9
RG-06	141	21.5	102	51	79	179	111	40	48

Note: For dimensions of mounting surface, please refer to HGM-03 & 06 type sub-plate (page 66).

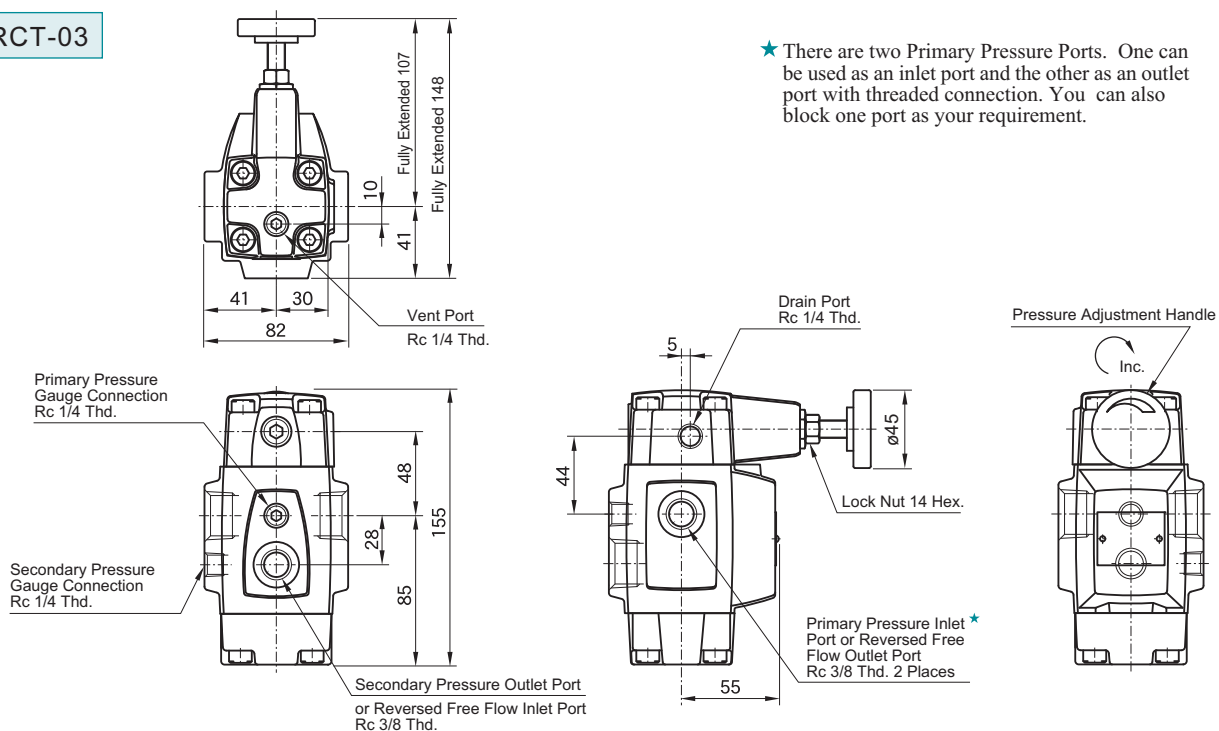
RG-10



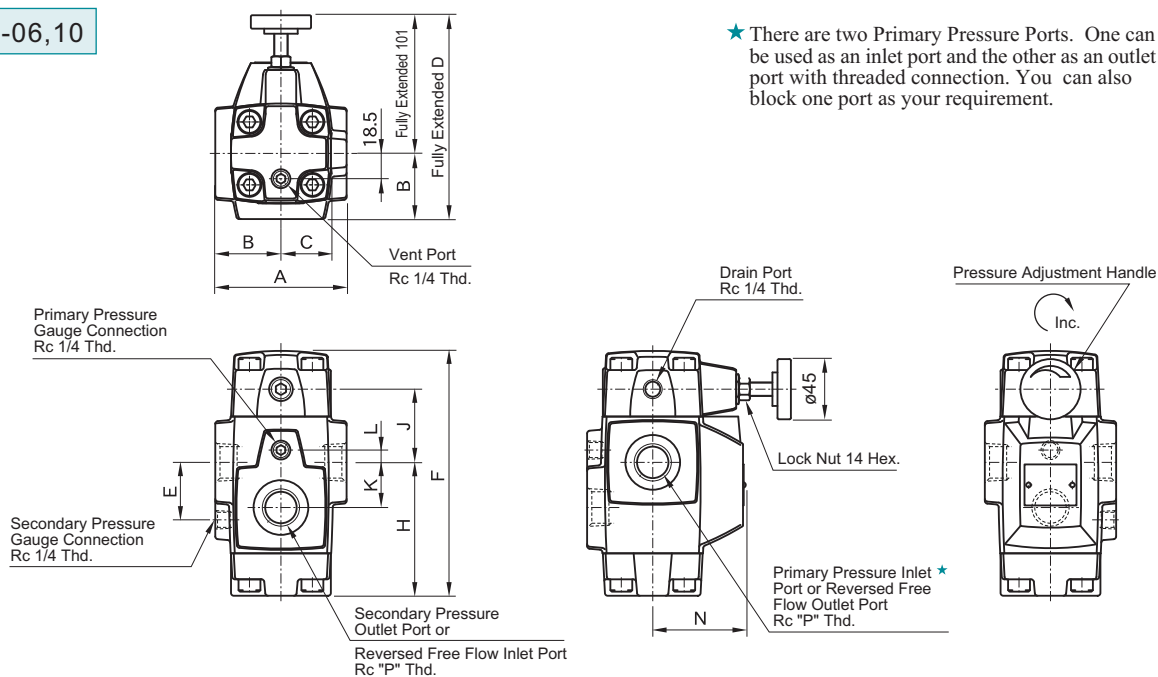
Note: For dimensions of mounting surface, please refer to HGM-10 type sub-plate (page 66).

Pressure Reducing & Check Valves Max. Pressure 21 MPa

RCT-03



RCT-06,10

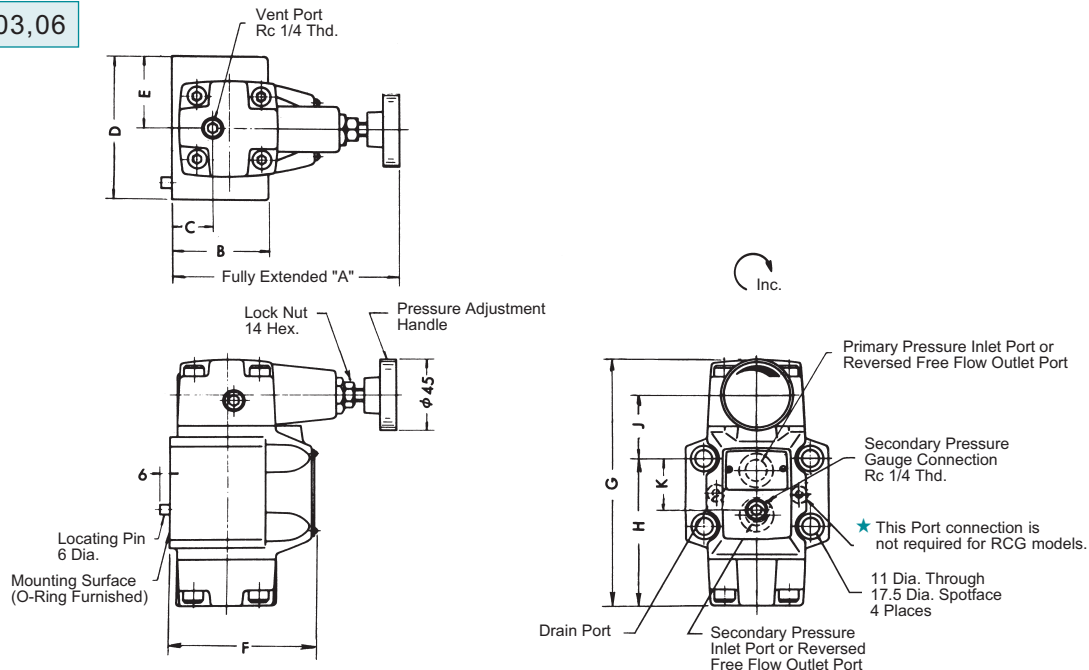


Model No.	A	B	C	D	E	F	H	J	K	L	N	Q
RCT-06	96	48	36.5	149	42	179	97.5	53.5	33	9	68	3/4
RCT-10	132	66	43	167	52	216	124	64	40	12	86	1-1/4

Pressure Reducing & Check Valves Max. Pressure 21 MPa

B

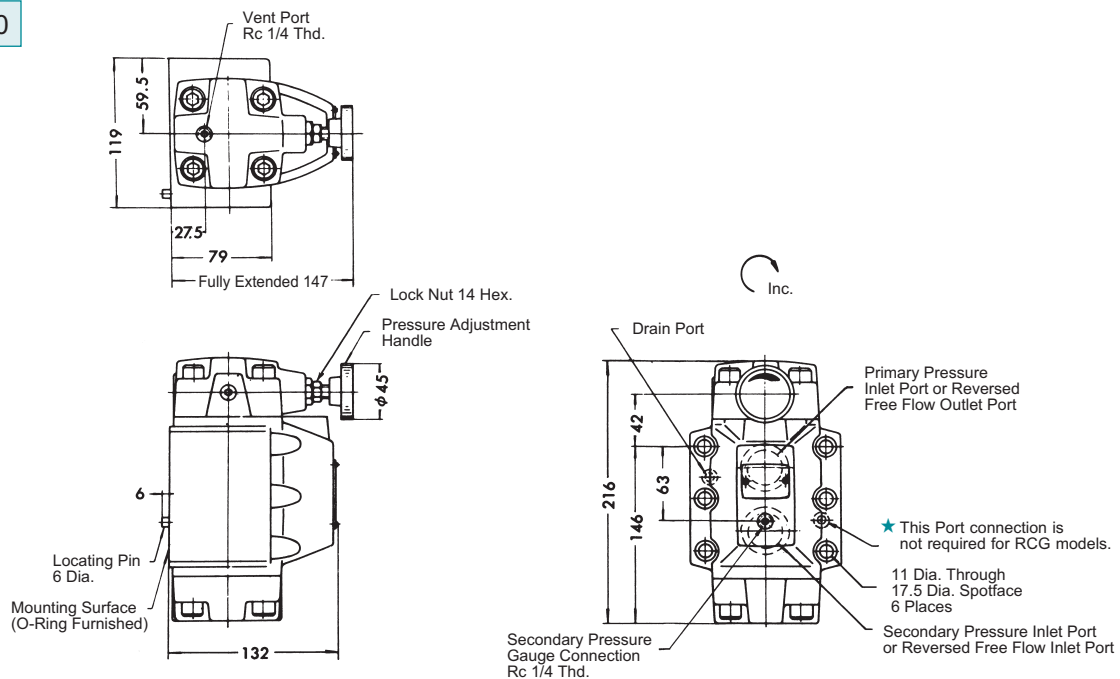
RCG-03,06



Model No.	A	B	C	D	E	F	G	H	J	K
RCG-03	142	59	25	89	44.5	90	155	92.4	40.6	34.9
RCG-06	141	69	21.5	102	51	108	179	111	40	48

Note: For dimensions of mounting surface, please refer to HGM-03 & 06 type sub-plate (page 66).

RCG-10



Note: For dimensions of mounting surface, please refer to HGM-10 type sub-plate (page 66).