

Throttle Modules Throttle & Check Modules

Max. Pressure 25 MPa

C



TC1G-01



TC2G

These valves, when used in combination with a solenoid operated directional control valve, regulate the speed of an actuator or control the change-over speed of the main spool by throttling the pressure port or the cylinder port.

Ratings

Valve Size	Model No.	Rated Flow L/min	Mass kg
1/8	TC1G-01-40	30	0.6
	TC2G-01-40		0.65

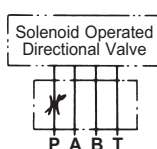
※ To count extra 25mm of screw length when mounting Solenoid Operated Directional Valves.

Model Number Designation

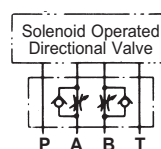
Series Number (Sub-plate mounting) TC1G:P Port Meter-in (C1)
TC2G:AB Port Meter-out(C2)

Design Number TC1G-01-40
Valve Size

Graphic Symbol

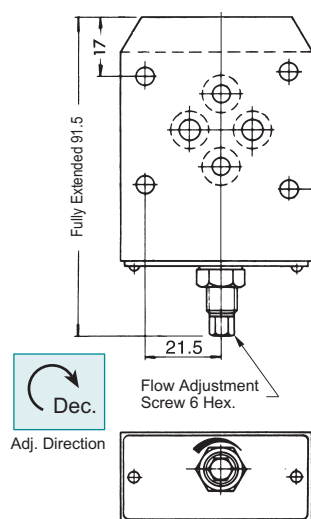


TC1G-01-40



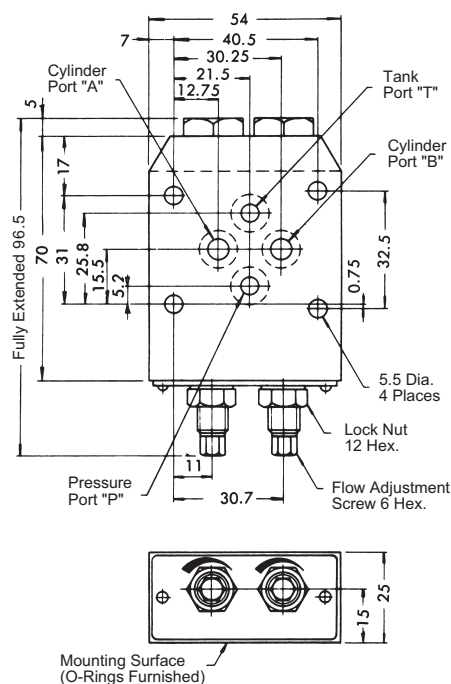
TC2G-01-40

TC1G-01-40



For other dimensions, please refer to TC2G-01 type

TC2G-01-40



Adj. Direction

Needle Valves

Max. Pressure 35 MPa

C



These valves can be used as a stop valve or a throttle valve to control the flow in small capacity pipelines, or can be used as a shut-off valve in pressure gauge lines.

Ratings

Valve Size	Model No.	Max. Flow L/min	Mass kg
1/4	GCT-02-31 GCTR-02-31	5	0.34

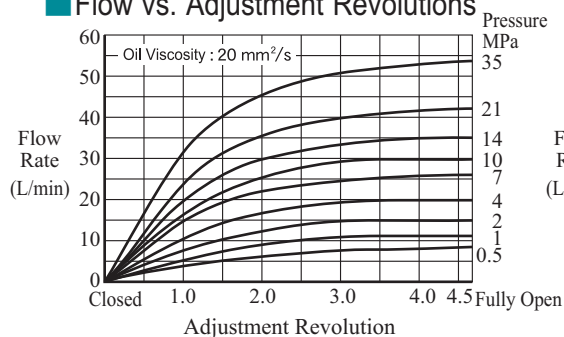
Model Number Designation

GCT-02-31
 Series Number (Threaded connection)
 GCT : In-line type
 GCTR : 90° Type
 Design Number
 Valve Size

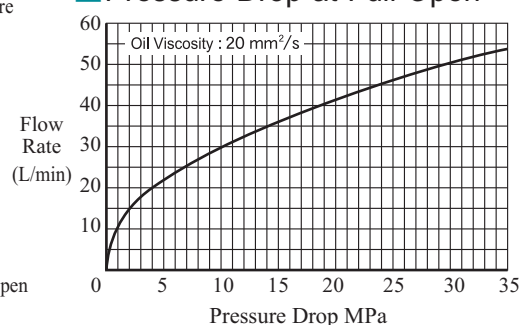
Graphic Symbol



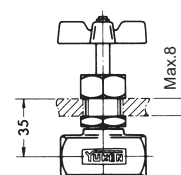
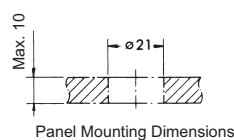
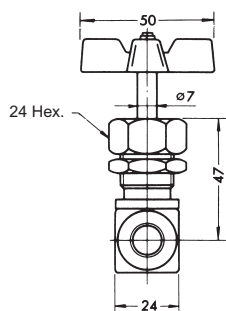
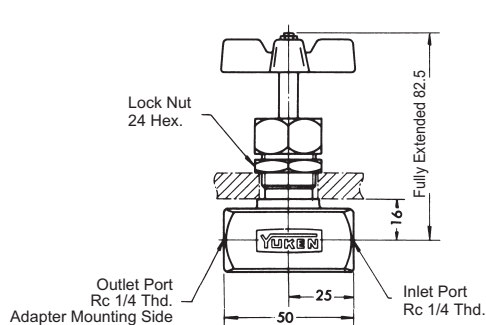
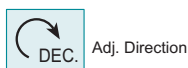
Flow vs. Adjustment Revolutions



Pressure Drop at Full Open



GCT-02



Mounting as above drawing is also available.

GCTR-02

